



ACO Plastic Channel H50

The Next Generation of plastic
drainage systems

The new shallow channel for balconies,
terraces and low height applications

ACO Plastic Channel H50

The Next Generation Channel

Versatile. Practical. Easy to assemble.

Drainage systems are becoming more and more important also in private spaces and **ACO Plastic Channel** offers a drainage solution for every situation and requirement.

This innovative channel is suitable for drainage in areas such as terraces and balconies where the installation height is limited. This is possible thanks to its low height and new technical details, such as the new side connections which make it easy to install.

ACO Plastic Channel H50 is available in a wide range of standard and design gratings perfectly integrated to the aesthetics of the surrounding environment.

Applications

- ▣ Terraces
- ▣ Balconies
- ▣ Gardens
- ▣ Façade drainage
- ▣ Residential developments
- ▣ Low height installation

Main features

- ▣ **Certified in accordance to EN1433**
- ▣ Easy to assemble
- ▣ High mechanical and chemical resistance
- ▣ Light weight
- ▣ Easy to carry
- ▣ Total height 50mm
- ▣ Plastic rail 5mm thickness
- ▣ 3 standard gratings
- ▣ 4 design gratings
- ▣ **Load class: A15, B125**

ACO Plastic Channel H50 - Innovative Design

A **complete system** with many advantages and possibilities

- 1 VERTICAL OUTLET ADAPTER installed with one "turn and click"
- 2 CLOSED END CAP
- 3 OPEN END CAP Ø32, can be installed in 5 different positions, lateral or head position



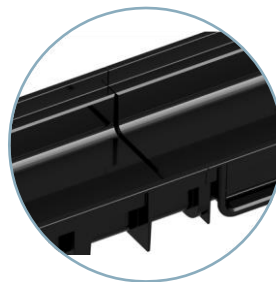
- 4 4 SIDE CONNECTIONS make it easy to install "L" or "T" shape drainage solutions
- 5 GRATINGS in different materials and design Load class A15 and B125
- 6 PLASTIC RAIL 5mm traffic exposure in accordance to DIN 19580
- 7 SEALING JOINT, it is possible to connect the two channels and seal male/female connection, plus additional sealing for yearly maintenance.

Innovative features for an easy installation

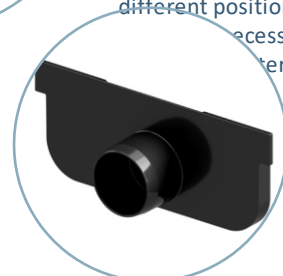
3

ACO Plastic Channel H50 Advantages

- ▣ The new connections allow to create T and L shape without using special pieces and without discontinuity for the drainage line
- ▣ Practical to be assembled, male and female and sealing joint in the dedicated area
- ▣ Accessories that can be used in different positions and can be used to add drainage capacity
- ▣ The low height of the channel, only 50mm total

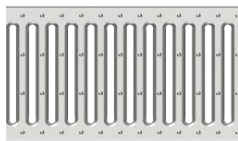


SEALING JOINT: the connection of the two channels create an area that can be used to position the sealant. The bituminous sealant can guarantee a perfect water tight drainage line.



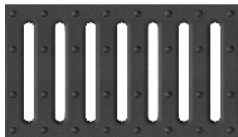
OPEN END CAP can be installed in 5 different positions and it can be used if necessary to increase the water outflow.

Standard gratings with classic but sophisticated details



1. Galvanized standard grating 5mm slot

The galvanized steel slot grating is well known in the market. The grating is distinguished by its simplicity and functionality. In addition, the high quality can assure an extremely durable solution.



2. PP/PE standard grating 8mm slot

The PP/PE grating is lightweight and has a great chemical resistance. Completely recyclable and durable. It is resistant to water, saline solution, alcohol and does not absorb liquids.

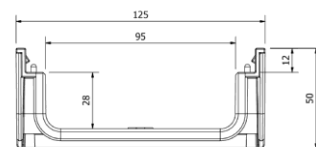
Design gratings

- Galvanised steel slim heelsafe grate with 5mm slot opening
- PP-PE composite black heelsafe grating with 8mm slot opening
- Gratings load class: A15
- Stainless steel custom solutions available on request

ACO Plastic Channel H50

Product information

- Plastic Channel
- 4 side connections each channel
- Plastic rail 5mm thickness
- Gratings load classes A15
- Built-in fixing system
- Available in Black



ACO Plastic Channel H50 BLACK

Dimensions

3

Grating Type	Load Class	Slot [mm]	Length [mm]	Width [mm]	Height [mm]	Artic. Num.
PP-PE	A 15	8	1000	125	50	330004
Galvanized steel	A 15	5	1000	125	50	330008

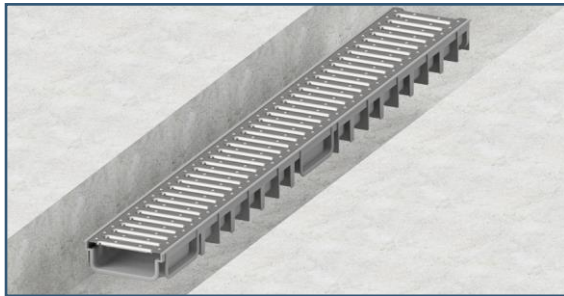
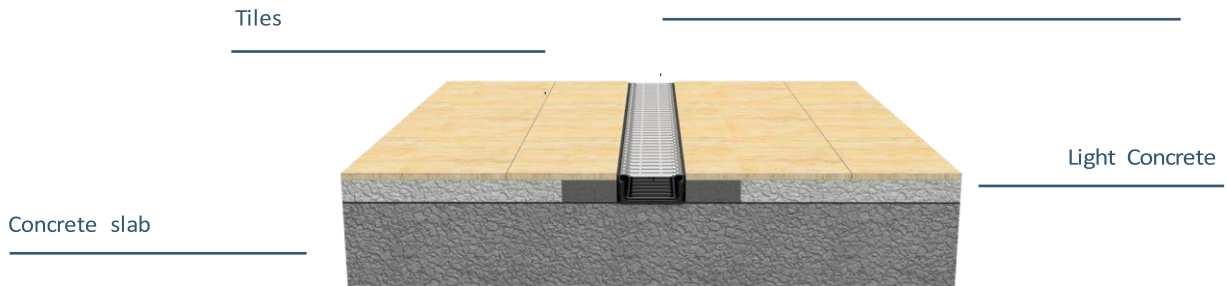
ACO Plastic Channel H50 KIT Optional

- 1 vertical outlet adaptor Ø110
- 2 end cap Ø32 outlet
- 1 closed end cap

Description	Artic. Num.
Kit vertical outlet + end caps BLACK	330020

ACO Plastic Channel H50, Installation

How to install the drainage channel correctly



1. Place the channel with the installed grating inside the trench.
It is suitable to protect the grating with a PVC film during the installation, to avoid any concrete residues.

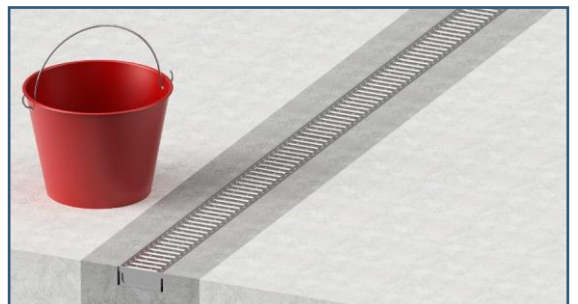


2. Apply the sealant on the of the connection area (male/female) and install the channels.
Verify that the drainage line respects all the relative quotes.

4



3. Create your drainage line and put the end caps. If necessary open the side connections and use pipes.



4. Finally fill the trench with concrete in order to completely fill and close all the spaces left free around the channels.

...Easy installation for a perfect result



Contact details:

ACO Systems (Pty) Ltd

122 Shad Road
Wadeville Ext 2
Germiston
South Africa

Tel: +27 11 8243525

Email: info@aco.co.za /
jjoubert@aco.co.za

www.aco.co.za